

FACTORS INFLUENCING EQUIPMENT PURCHASES IN HEALTH AUTHORITIES

1
2
3

PRIORITY

- ensures patient safety or improves outcomes
- in alignment with site and health authority priorities
- replaces broken, lost, outdated equipment or that which poses a cybersecurity risk



TOTAL COST

- taxes, freight, duties
- ongoing operating, cleaning, service/repair costs including supplies (Biomed, MDR, Infection Control)



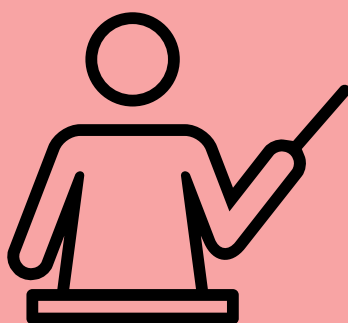
LOCAL OR REGIONAL IMPACT

- is it a new technology which all sites should consider or only a local need?



FOUNDATION/AUXILIARY

- can a donor or board fund the item?
- can a campaign be built?



TRAINING REQUIREMENTS

- do users need training and who can provide it?
- is there a cost to provide the training?